

**Locate Cable End at Firewall**

Measure up from the stiffener shelf 2.25 inches and starboard from the center stiffener 1.25 inches. Drill a 3/8 hole.

**Split Jam Nut**

Place the outer jam nut on the end of the throttle cable with the round ball on it in a vise. With a hack saw or rotary cutter cut a slot in the jam nut so that the jam nut can be removed from the throttle cable end adjuster.



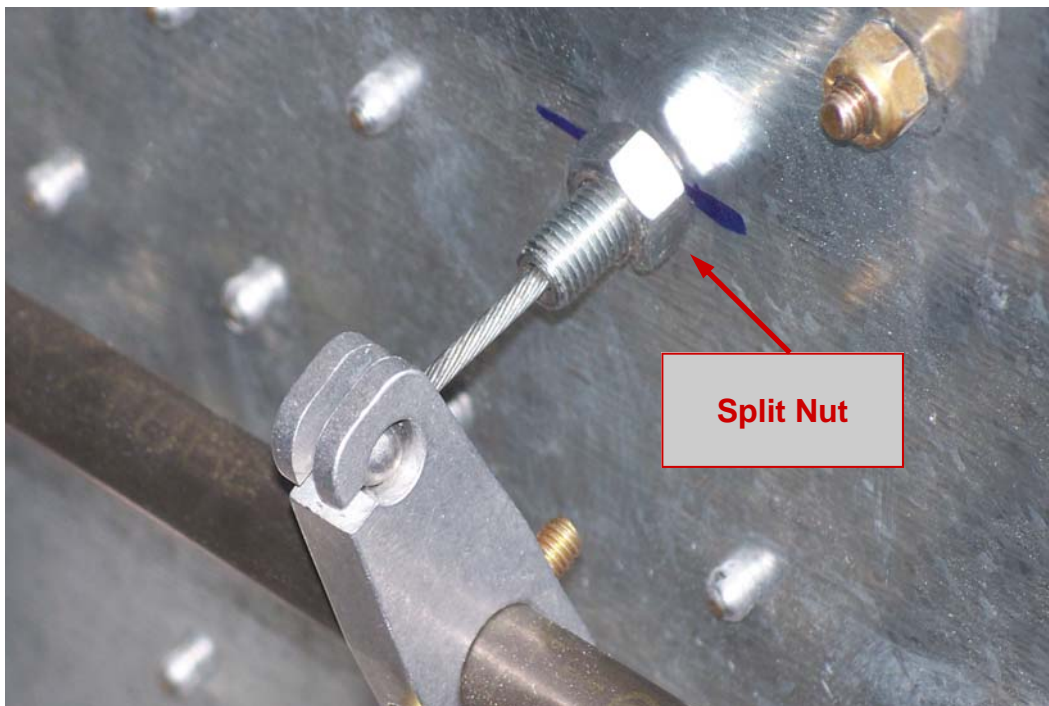
**Install Cable End to Firewall**

Remove the split jam nut.

Insert the cable end adjuster into the hole you drilled in the firewall.

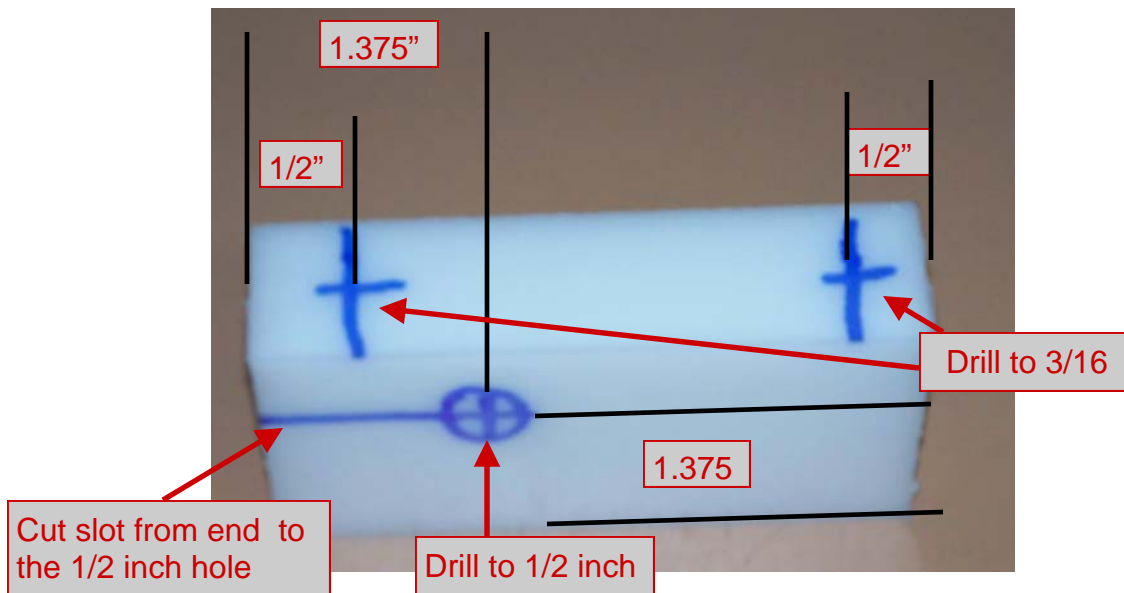
Install the split nut onto the cable end adjuster on the aft side of firewall.

Adjust cable end so 1/2 inch of the adjuster protrudes form the aft firewall.



### **Prepare Throttle Support Blocks**

Locate the 1x2x8" acetal block and cut it into 2 pieces 1x2x4"  
Mark and drill per the dimensions in the photos below.



### **Assemble Throttle Cross Rod**

Install the throttle output lever (the short lever) onto the cross rod. The slot will be facing to the rear.

Install the two throttle input levers about 1.5 inches in from each end.

Do not drill at this time.

Install the two support blocks on the ends of the cross rod.

### **Attach Cross Rod Assembly to Throttle System**

Attach the output lever to the throttle cable by inserting the swaged ball into the receiver.

Adjust the position of the output lever on the shaft so that the cross rod is cen-



tered on the firewall.

Position the output lever against the cable end adjuster and drill a 3/16 hole through the output lever and cross rod. Install a AN3-11A bolt to hold the position.

Level the cross rod across the firewall and position the support blocks at the outer ends of the cross rod in a position where they will not interfere with other fittings (angle iron bracket, etc) on the firewall.

Drill through the support blocks and firewall and install the four AN3-23A bolts with the heads forward of the firewall and the nylock nuts and washer on the aft side of firewall. Snug up the bolts.

With the output lever up against the cable end adjuster, position the input levers so that they are snug against the support blocks and the top ends are about 1/2 inch from the firewall. Drill through the input levers and cross rod and install



AN3-11A bolts.

Install rod ends on the outboard sides of the input levers and secure with AN3-11A bolts, washers, and nylock nuts.

### **Assemble Throttle Push Pull Rods**

Insert the 1/4—28 threaded rod and jam nut into aluminum push pull rod

Install throttle knobs on ends of push pull rods.

When panel is in place attach the push pull rods through panel (drill 1/2 inch hole and mount a 1/8 acetal cushion block with 3/8 hole behind panel to support push pull rod)

Attach to the male rod ends on the input levers using a jam nut to hold position.

**Attach Cable to Carb**

Turn one jam nut off the end of the carb end cable adjuster.

Insert the cable through the slot on the upper hole in the carb bracket

Insert the drive pin from the throttle cable into the throttle arm on the carb. You may have to sand away any excess solder that is on the cable drive arm to get it into the carb throttle arm.

Place a 5/8 washer over the cable drive arm behind the carb throttle arm and secure with a cotter pin.

Reinstall the jam nut and adjust cable length so that when throttles are pushed all the way in that the throttle arm on the carb reached the stop on the carb.